

INTERNATIONAL SCHOOL ALMERE THE NETHERLANDS

2017/18 School Prospectus

Table of Contents

An IB World School	3
Mission Statement	3
Philosophy	3
Objectives	3
IB learner profile	4
The International Baccalaureate Mission Statement:	4
Administration	5
School Leadership Team	5
School Address	5
Payment Details	5
School Holidays 2016-2017	5
Lesson Schedule	6
Staff Information	7
Mentor list	8
Communications tree.....	8
School Organigram	9
Descriptions of special functions within the school	10
Curriculum	11
The Middle Years Programme at the International School Almere	11
Curriculum	11
The eight subject areas of the middle years programme are:.....	11
Community and Service	11
Assessment	12
The Diploma Programme at International School Almere	12
DP Subject choices	12
Subjects offered at International School Almere in 2015-17 (two years programme)	12
The core of the Diploma Programme.....	13
DP Assessment	13
IB Diploma requirements	13
Student's results in May 2015 examination session	Fout! Bladwijzer niet gedefinieerd.
General Academic information	14
Reporting	14
Academic honesty	14
Accreditation of programmes	14
General Information	15
Student expectations and general code of conduct	15
Admissions	15
Attendance	15
Excursions and insurance and loss of property	15
The ISAlmere community	16
Student representatives and council	16
Parent Support Group (PSG)	16
School representative council (DMR)	16

An IB World School

“A Personal Touch in a Sustainable Environment”

The International School Almere is a dynamic IB World School located in a beautiful building on the edge of Cascadepark in Almere Poort, 25km east of Amsterdam. It was built using sustainable materials. We offer quality international education in a safe and sustainable environment.

Mission Statement

It is the mission of the International School Almere to inspire our students to reach their full potential and through them contribute to a better and more peaceful world by striving for academic excellence, intercultural awareness and mutual respect. To do so, we offer our students a challenging, comprehensive education within a diverse, caring and encouraging community of learners, enabling them to develop the intellectual and social skills necessary to achieve their full potential. Diversity is essential to our mission. According to the principles stated in the United Nations Declaration of Human Rights, people of all races, nations and religions should respect and honour each other. We teach our students to understand and respect the views, values and traditions of other individuals and cultures, as well as their own. The school's commitment to academic excellence is matched by a belief in holistic learning. All members of the school community are encouraged to pursue excellence and are recognized for their achievements.

Philosophy

We are dedicated:

To motivate students to learn how to acquire knowledge by making full use of resources both within and outside the school, using a variety of teaching strategies

- challenging students to realize their potential, recognizing that all students have the ability to learn and that they learn at different rates, have different learning styles, abilities and interests; providing a positive, welcoming and safe environment with clear stated expectations and guidelines
- delivering a high quality international programme leading to the IB-diploma in preparation for higher education;
- encouraging self-discovery and self-expression that values understanding and appreciation of diversity;
- promoting a knowledge and understanding of world issues and intercultural awareness.

Objectives

- ISAlmere provides a fully authorized, high quality international programme leading to the IB-diploma in preparation for higher education.
- Instruction in English, support in foreign languages, Humanities, Sciences, Mathematics, Design, Visual Arts, Music, Drama and physical and health education;
- Focus on creative thinking, intercultural awareness, critical reasoning and effective communication skills;
- Teachers that systematically review and update the curriculum;
- International accreditation

ISAlmere seeks to provide a positive, welcoming and safe environment with clear stated expectations and guidelines:

- every individual is unique and deserves respect, regardless of faith, race, gender, beliefs or land of origin;
- clear leadership of the school compliance with Dutch safety and work environment laws.

The aim of all IB programmes is to develop internationally minded people who, recognizing their common humanity and shared guardianship of the planet, help to create a better and more peaceful world.

IB learner profile

IB learners strive to be...

Inquirers

They develop their natural curiosity. They acquire the skills necessary to conduct inquiry and research and show independence in learning. They actively enjoy learning and this love of learning will be sustained throughout their lives.

Knowledgeable

They explore concepts, ideas and issues that have local and global significance. In so doing, they acquire in-depth knowledge and develop understanding across a broad and balanced range of disciplines.

Thinkers

They exercise initiative in applying thinking skills critically and creatively to recognize and approach complex problems, and make reasoned, ethical decisions.

Communicators

They understand and express ideas and information confidently and creatively in more than one language and in a variety of modes of communication. They work effectively and willingly in collaboration with others.

Principled

They act with integrity and honesty, with a strong sense of fairness, justice and respect for the dignity of the individual, groups and communities. They take responsibility for their own actions and the consequences that accompany them.

Open-minded

They understand and appreciate their own cultures and personal histories, and are open to the perspectives, values and traditions of other individuals and communities. They are accustomed to seeking and evaluating a range of points of view, and are willing to grow from the experience.

Caring

They show empathy, compassion and respect towards the needs and feelings of others. They have a personal commitment to service, and act to make a positive difference to the lives of others and to the environment.

Risk-takers

They approach unfamiliar situations and uncertainty with courage and forethought, and have the independence of spirit to explore new roles, ideas and strategies. They are brave and articulate in defending their beliefs.

Balanced

They understand the importance of intellectual, physical and emotional balance to achieve personal well-being for themselves and others.

Reflective

They give thoughtful consideration to their own learning and experience. They are able to assess and understand their strengths and limitations in order to support their learning and personal development.

The International Baccalaureate Mission Statement:

The International Baccalaureate aims to develop inquiring, knowledgeable and caring young people who help to create a better and more peaceful world through intercultural understanding and respect. To this end the organization works with schools, governments and international organizations to develop challenging programmes of international education and rigorous assessment. These programmes encourage students across the world to become active, compassionate and lifelong learners who understand that other people, with their differences, can also be right.

For more information on the IB programmes and organisation click [here](#) or www.ibo.org

Administration

School Leadership Team

Rubin Borges – Head of School

Overall responsibility

Strategic Planning

External Contacts and representation of the school

Communication with DMR and PSG

Communication with the ISAlmere Board

Sabrina Stremke – Middle Years Programme Coordinator

Curriculum Planning- MYP

Pedagogic leader for the MYP

Simona Ghizdareanu – Diploma Programme Coordinator

Curriculum Planning - DP

Pedagogic leader for the DP

School Address

International School Almere

Heliumweg 61

1362 JA Almere

Tel.: + 31 (0) 36 7600750

E-mail: info@edu.isalmere.nl

Internet: www.internationalschoolalmere.nl

Payment Details

Account number:

IBAN: NL69RABO0132484420

BIC: RABONL2U

International School Almere

Heliumweg 61

1362 JA Almere

School Holidays 2017-2018

Autumn break	21 October – 29 October 2017
Professional development day	30 October 2017
Professional development day	22 December 2017
Winter break	22 Dec – 07 January 2018
DISS conference (no lessons)	2 Feb 2018
Professional development day	23 Feb 2018
Spring break	24 Feb – 4 March 2018
Good Friday	30 March 2018
Easter break	31 March – 2 April 2018
May break	23 April – 6 May 2018
Ascension day	10 May 2018
Lesson free day	11 May 2018
Whitsun	21 May 2018
Professional development day	22 May 2018
Last day of school for students	18 July 2018
Summer break	19 July – 5 September 2018

The school cannot permit students to take holidays outside the official school holidays. Attendance records are a legal requirement, which may be assessed by statutory bodies. *Under extraordinary circumstances the parents can make a request for special leave.*

Lesson Schedule

Period 1	8:30 -9:15
Period 2	9:15 - 10:00
Period 3	10:00- 10:45
Break	10:45 - 11:00
Period 4	11:00 - 11:45
Period 5	11:45 - 12:30
Lunch	12:30 - 13:10
Period 6	13:10 - 13:55
Period 7	13:55 -14:40
Period 8	14:40 -15:25
After school club	15:30 -16:30

Staff Information

	Code	Staff name	Subject / Role	Other roles
1	ADJ	Juanita Arnaud	Mathematics	
2	RBS	Rubin Borges	Head of School	
3	BM	Martina Abbing-Brouwer	Lab technician	
4	BNY	Yvonne Burleson	Student administration & ICT coordinator, Timetabler	
5	COA	Amanda Cansino	Science	
6	CTC	Chris Champion	Drama	New staff coach Contact person
7	RSE	Elsje de Roos	Dutch Language Acquisition	
8	MSU	Suzanne de Maat	Science / Biology / ESS	
9	VSM	Maayke de Vries	History and I&S	
10	ENL	Lars Engberts	PHE	After school club coordinator
11	GNR	Rozemarijn Geelen	Drama	
12	GHS	Simona Ghizdareanu	Mathematics	DP Coordinator
13	GIR	Florencia Giri	Spanish Language Acquisition	Language B Coordinator
14	SAGN	Suklima Guha Niyogi	Science / Physics / Maths	
15	HEG	Guus Hendrickx	Visual Arts	
16	KNB	Bern Kroesen	Physical and health education	
17	KRR	Jansje Kruger	Mathematics	
18	LSG	Gigi Laméris	Visual Arts	
19	LUY	Yvette Lucas	School Secretary	
20	LNP	Paul Lewin	English Language & Literature	
22	MOR	Josefina Moreno	Spanish Language Acquisition	
23	ANM	Magali Naezer-Anduze	French Language Acquisition	
24	OIO	Olja Orlandini	English Language Acquisition	Technology in the classroom coord
25	PTS	Coert Peeters	Dutch Language Acquisition	
26	PRR	Riette Pienaar	Science Chemistry	
27	RWD	Daisy Rauwerda	English	
28	RGJ	Jacqui Rietberg	Librarian	
29	SIN	Niloufar(Lilly) Saghari	Education Assistant	
30	SSG	Georgios Skantzaris	Physics	
31	SDR	Rupali Sood	English Language Acquisition	
32	SES	Sabrina Stremke	History and I&S	MYP coordinator
33	STS	Suzanne Stuurman	Care team coordinator	
34	MNK	Koen van der Meijden	Design	
35	VTH	Hans van der Voort	Care taker	
36	ETM	Milou van Etten	Dutch Lang& Lit / Lang acquisition	Anti-Bullying Coordinator
37	WGJ	Jennifer Waring	English Lang & Lit	
38	WNG	Eli Wing	Music	
39	ZRS	Saba Zaheer	Economics and B&M	
40	RSJ	Jose Maria Zuniga Reinares	I&S, B&M and ToK	

Mentor list

MYP1a – Juanita Arnaud

MYP1b – Lars Engberts

MYP2a – Gigi Lameris

MYP2b – Jose Reinares

MYP3a – Suklima Guha Niyogi

MYP3b – Elsie de Roos

MYP4i1 – Riette Pienaar

MYP4i2 – Jansje Kruger

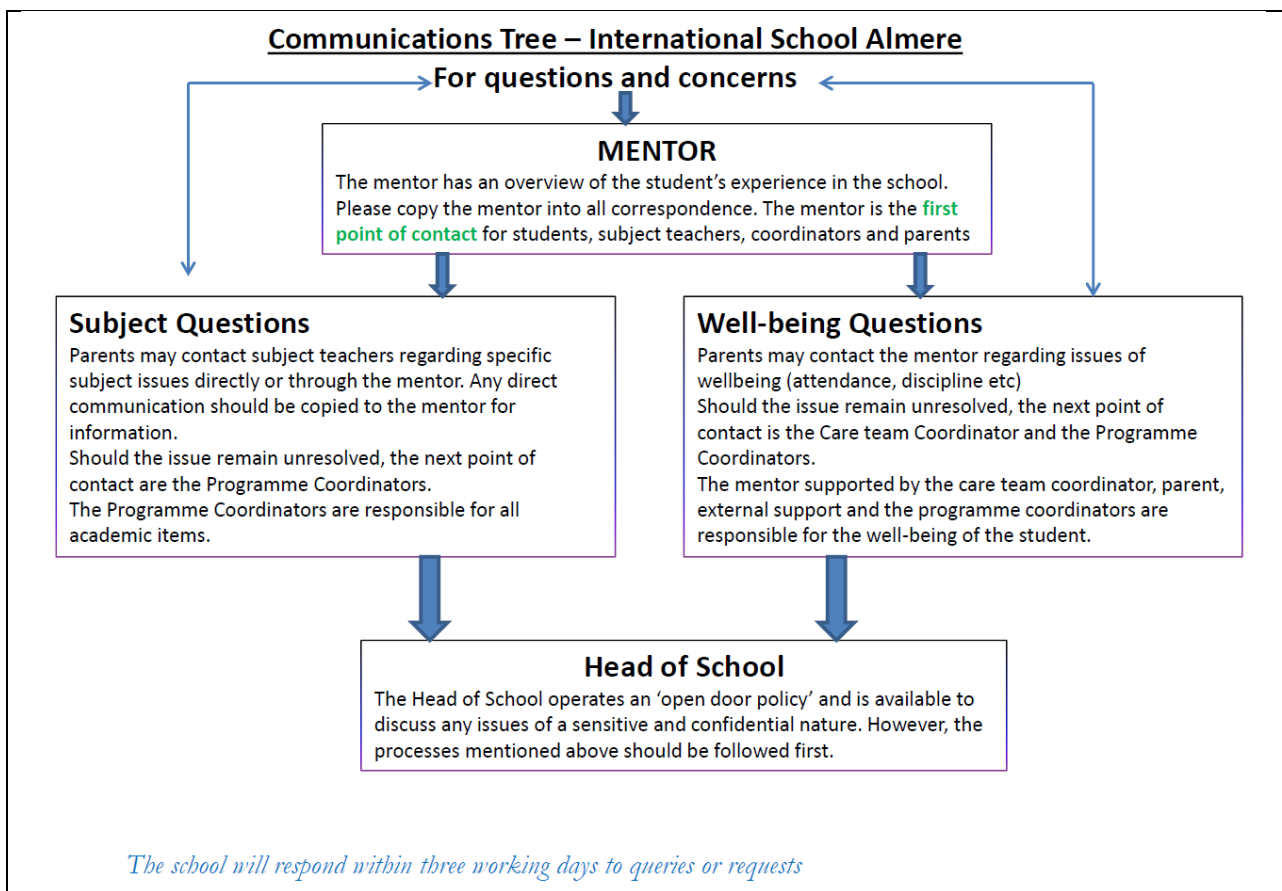
MYP4b – Maayke de Vrie

MYP5i – Olja Orlandini

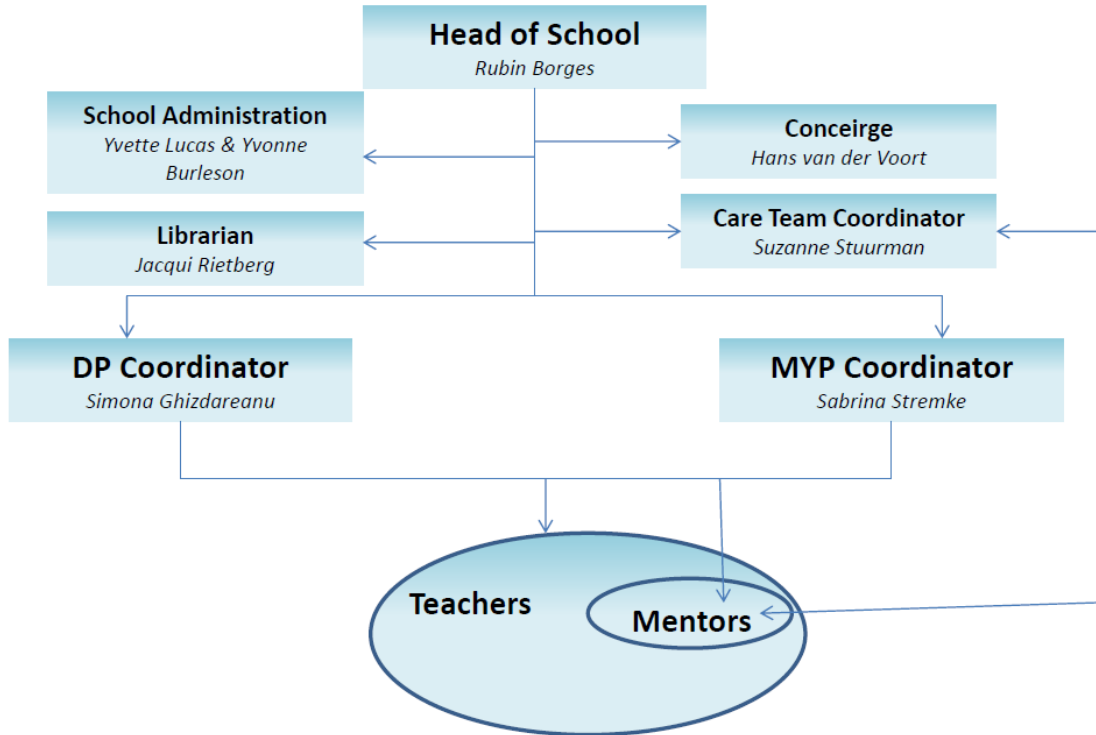
MYP5b- - Milou van Etten

DP mentors: - Magali Anduze, Florencia Giri, Suzanne de Maat, Paul Lewin, Jennifer Waring, Saba Zaheer

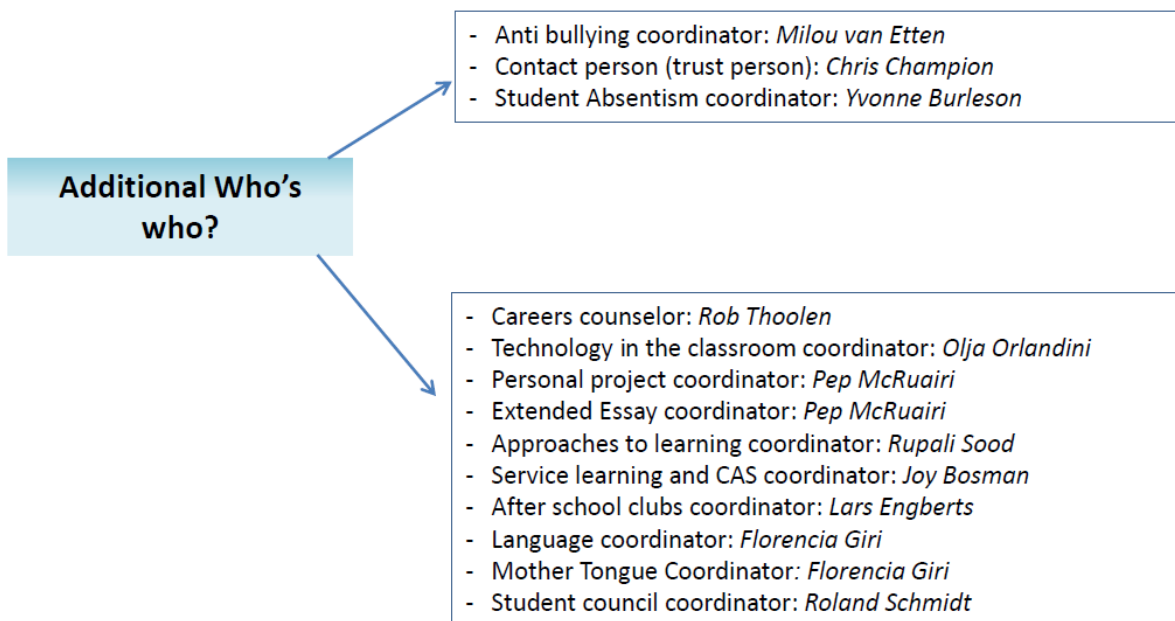
Communications tree



ORGANIGRAM 2017-2018



Other roles in 2017-2018



Descriptions of special functions within the school

Mentor

First point of contact for students, parents and teachers. Responsible for providing study, motivation and behavioural guidance to a specific group of individual students in their mentor groups; helping with personal or school related problems; communicating school information to students; checking and monitoring reports; liaising between home and school in educational issues as the first point of contact when problems arise.

MYP Coordinator

Responsible for the day to day delivery of the Middle Year Programme, developing understanding of MYP ethos and requirements of teachers, students and parents within the school; guiding and monitoring progress towards MYP goals and certificate, where eligible; liaise with local and international agencies, in particular the IB. Guiding and monitoring course selection and progress towards the successful completion of the IBMYP.

DP Coordinator

Responsible for the day to day delivery of the Diploma Programme. Developing an understanding amongst students, staff and parents. Liaise with local and international agencies, in particular the IB. Distributing information to students directly or through the mentors. Guiding students while getting their subject packages and supporting the careers advisor with liaising with further education in Universities.

Care team/Student Counsellor

The student counsellor is responsible for guiding students whose school careers are affected by out of school or personal problems. Students are referred to the student counsellor after consultation with the mentor. If necessary, the counsellor will ensure contact is made with external organizations, such as the GGD or GGZ (Municipal Health Service), Bureau Jeugdzorg (Youth Care Office) and the Regional Bureau Leerlingzaken (Regional Student Affairs Office). The counsellor conducts regular multidisciplinary student meetings with these external organizations. Parents will be informed if these meetings indicate that additional (external) contact is required.

CAS and Community and Service Coordinator

Responsible for establishing the Community and Service, and the Creativity, Action and Service ethos in the school; organizing and monitoring both programmes according to IB guidelines; devising and supervising the record-keeping procedures.

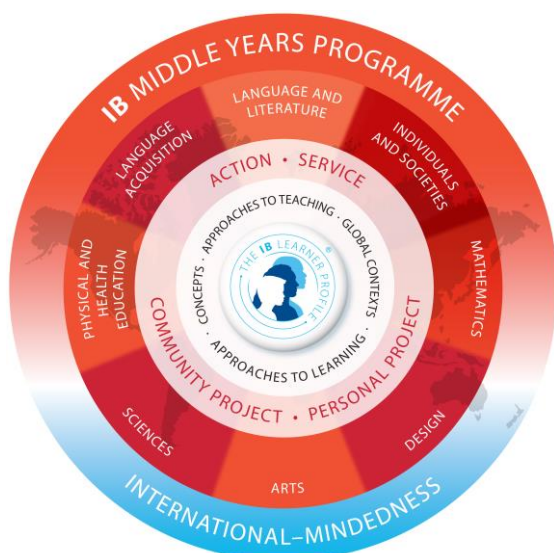
Careers Advisor

Responsible for providing advice to students on higher education and career opportunities within and beyond the Netherlands; overseeing provision of Future Wise professional profile test, workshops, visiting speakers, visit to career fairs, interview training; co-ordinating reference writers.

Curriculum

The Middle Years Programme at the International School Almere

Curriculum



The MYP is designed for students aged 11 to 16. It allows students to become active learner and encourages them to become creative, critical and reflective thinkers. The curriculum supports students to make connection to the outside world with the use of concept and context based learning. The MYP promotes the development of skills for communication, intercultural understanding and global engagement, qualities that are essential for life in the 21st century.

The overall philosophy of the programme is expressed through three fundamental concepts that support and strengthen all areas of the curriculum.

These concepts are based on:

- **Holistic learning:** the MYP offers an approach to not only make connection between the various subject but to also connect the curriculum to the outside world. Besides the

holistic approach of the curriculum, the MYP puts the student in the center and fosters the personal development and the growth of the whole student.

- **Intercultural awareness:** MYP allows students to consider different perspectives and develop and what is common and what is different. By encouraging students to consider multiple perspectives, we aim to promote tolerance and respect, which will help students to develop empathy.
- **Communication:** The MYP focus on the idea that students learn through inquiry and understanding. We offer a strong language programme that encourages different ways of thinking and expressing. Besides languages, we offer visual and performing arts as well as the use of ICT as important ways of communication.

The eight subject areas of the middle years programme are:

Language A: Students whose language is their mother or near mother tongue follow this course. We offer Dutch A and English A.

Language B: These are modern language students acquire additionally. We offer Spanish B, French B, Dutch B and English B.

Science: This course is an integrated course coming all the sciences.

Mathematics: We offer Mathematics as an integrated course from MYP1-MYP3. In MYP4 and MYP5 we offer Mathematics Extended and Standard courses.

Individuals and societies: This subject is offered as an integrated course. It is combination of History, Geography, Global politics, Economics and Business Studies.

Arts: In our school we offer Drama, Visual Arts and Music.

Physical and Health Education: All students take PHE.

Design: All students take technology.

Community and Service

Community and Service is the core part of the programme. It gives students the opportunity to engage in their community, nationally and globally. While the MYP curriculum connects topics with the idea of community and service, students are also encourage becoming active in their community leading to action. From MYP3, students are stimulated to initiate their own projects outside of school. There are different

requirements for the different year levels, to be found in the Community and Service document on the website. Students are not able to go to the next year group if they do not meet the requirements.

Assessment

We follow the IB Middle Years Programme system of Assessment. The MYP format of assessment is known as a “Criterion Related” and this means that the students are evaluated against subject specific criteria and the students are not evaluated against their peers. There are different types of assessment including **formative** and **summative assessments**.

Formative assessments are used as checkpoints to determine if students are on the right track. Teachers can then make decisions based on analyzing the formative assessments to move on to a new topic or to reteach a topic. **Summative assessments** are used at the end of a topic to evaluate student mastery.

The academic year is divided into **three terms**. At the end of each grading period each student will receive a report card that indicates his or her levels of achievement for criterion that was assessed for the grading period in each subject area. The Final Grade earned at the end of Term 3 represents an overall judgment of the students’ work throughout the entire academic year, and the Final Grade, in conjunction with other requirements, is used to determine whether or not a student is promoted to the next year group.

To access the ISAlmere assessment booklet, click [here](#)

The Diploma Programme at International School Almere

The Diploma Programme is designed as a two years course, preparing students for university level and gives them an international qualification. We strive to get students to be independent learners and a critical thinkers by the end of the programme.

DP Subject choices

In order to complete the full diploma, the students will select 6 subjects from the subject groups offered in school:

- Two languages (can be two languages A or a language A and a language B)
- one subject from each of the following groups: Individuals and Society, Sciences, Mathematics
- one subject at choice from The Arts or any of the other five groups

From the six subjects, three are taken at higher level and the other three subjects – at standard level. With the support of the career advisor, mentor and DP Coordinator, the students design their subject choices for the best preparation for their future career.

Subjects offered at International School Almere in 2017-19 (two years programme)

Group1 (Language and Literature A)

English Language and Literature SL/HL
Dutch Language and Literature SL/HL
School supported self-taught language SL

Group 2 (Language Acquisition B)

Dutch SL/HL
English SL/HL
Spanish SL/HL
Spanish ab initio SL
French SL/HL



Group 3 Individuals and Society

History SL/HL

Business & Management SL/HL

Economics SL/HL

Environmental systems and societies SL

Group 4 Sciences

Biology SL/HL

Physics SL/HL

Chemistry SL/HL

Environmental system and societies SL

Group 5 Mathematics

Mathematics SL/HL

Mathematical Studies SL

Group 6 The Arts

Visual Arts SL/HL

The core of the Diploma Programme

At the core of Diploma Programme, students have the opportunity to work on Extended Essay- a research in depth on a topic at the interest of the student, finalised with an essay of 4000 words. Together with Theory of Knowledge, the extended essay is a requirement in order to award to diploma. Students have to successfully complete the Creativity, Action and Service requirements of the programme to be awarded a Diploma.

DP Assessment

During the two years programme, the student takes the benefit of formative and summative assessment. The aim is to support students to improve their learning. Formative and summative assessment opportunities offer feedback on student's strengths and points that need improvement.

During the course, students receive interim grades, final grades and predicted grades as indication of their performance during the programme.

The final assessment consists of internal assessment and external examination for all chosen subjects, together with Extended essay and TOK presentations and essays. The work for the internal assessment is assessed by the subject teacher and moderated by international moderators. The externally assessed exams, given in the May session, are checked by external examiners. The school offers the possibility of retaking exams in the November session every year.

To access the ISAlmere assessment booklet, click [here](#)

IB Diploma requirements

In order to be awarded their diploma, students need to meet requirements defined by the International Baccalaureate. 24 points and a satisfactory completion of extended essay, theory of knowledge and CAS are the minimum requirements.

A maximum of 45 points can be achieved by a student. Each subject is graded with points between 1 (minimum) and 7 (maximum). An extra 3 points can be achieved if very good extended essay and TOK essay are submitted by the student.

Our successful students are enrolled in various universities and HBOs, in The Netherlands and abroad, like *Medische Natuurwetenschappen at the Vrije Universiteit of Amsterdam*, International Psychology at the University of

Leiden International Hospitality Management at the Emirates Academy of Dubai, Hotelschool The Hague, at HBO level.

General Academic information

Reporting

Students receive three summative reports throughout the academic year as well as two progress reports, which gives both student and parent information about the student's general progress and behaviour.

Reporting dates for 2017/18:

Report 1

DP2 1 Dec 2017

MYP and DP1 8 Dec 2017

Progress report

MYP and DP1 4 April 2018

Mocks report

DP2 16 February 2018

Report 2

DP2 23 March 2018

MYP and DP1 18 July 2018

The ISAlmere use Managebac as a reporting tool. Parents and students are able to follow a student's progress "real time" throughout the year. Reporting happens digitally for reports 1 and 2 and the progress report.

Academic honesty

To view the ISAlmere academic honesty policy click [here](#)

Accreditation of programmes

For access to the IB authorizations certificates click [here](#)

General Information

Student expectations and general code of conduct

At the ISAlmere we believe in setting clear expectations for general conduct by students. These expectations are based on mutual respect.

To access the students expectation click [here](#)

Admissions

The International School Almere is a fully authorised IB world school, providing quality international education, in English, for students from 11 to 18 years of age. The school welcomes applications from students regardless of gender, ethnicity or religion. The Diploma Programme is fully English and allows students entry to universities all over the world. The decision to admit or not admit a student to the International School Almere is based on the availability of space at the appropriate grade level, the school's ability to meet each student's needs and the student's ability to fulfil the programme requirements. Applications are possible via isalmere.openapply.com

To access our admissions policy click [here](#)

Attendance

Students are expected to be on time for all lessons and appointments. When a student is absent due illness or another legitimate reason, parents are requested to contact the school before 8.30 hours the same day through telephone or via a message at absent@edu.isalmere.nl

No extra special leave days for extended vacations are approved by the school. A request for special leave can be downloaded from the website and will be approved under very special circumstances.

Examples of reasons for special leave that are not accepted are:

- An extended trip due to long flights to see family
- Cheaper flights outside holidays

For a more detailed attendance protocol click [here](#)

Excursions and insurance and loss of property

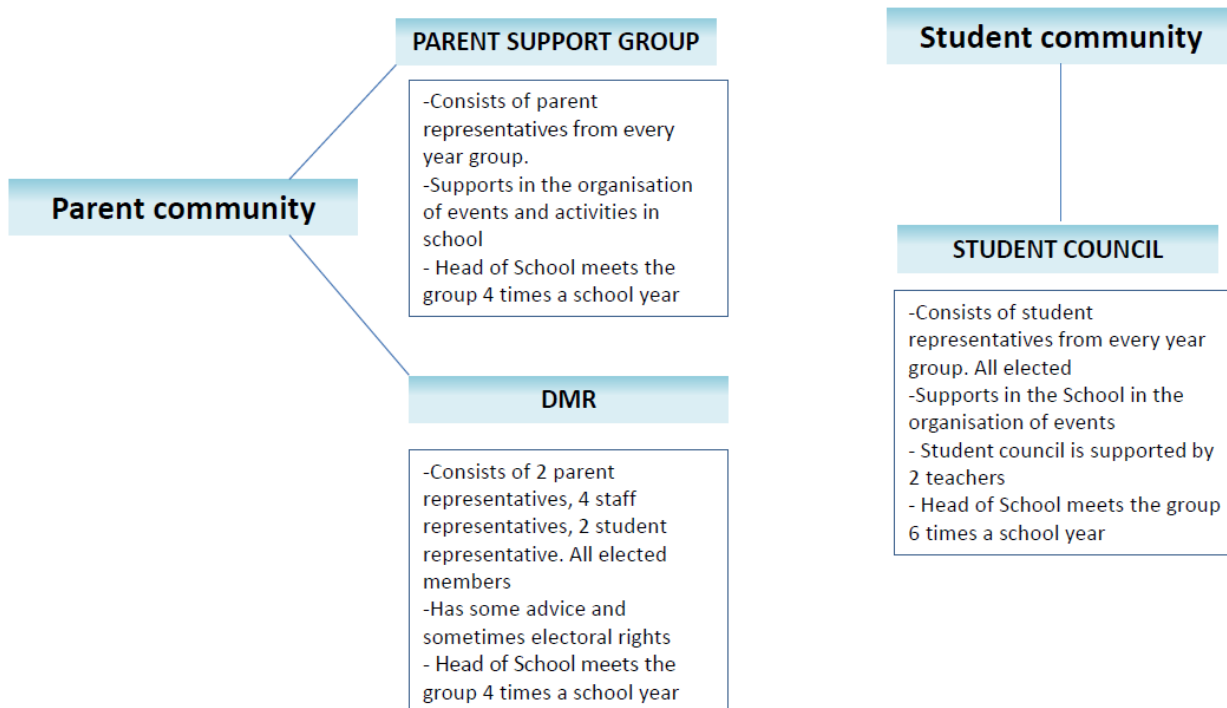
The school's insurance is applied secondary to the students' individual insurance.

The school cannot be held responsible for personal property damaged on the school property or on excursions. All valuable items including electronic devices brought to school is at the owner's own risk. Students all have access to large personal lockers and are advised to use them for storage of valuables.

The school organises an excursion abroad. These excursions are mandatory and parents have to pay an additional fee of approximately 450 euro for these excursions. All year groups do not have the excursions overseas. All excursions are connected to the curriculum. The school strives to organise excursions for at least one year group in the MYP and DP. Throughout the year several excursions take place in the region. The school covers the cost of these excursions.

At the beginning of the school year all students go on an introduction camp for three days to get to know one another and renew friendships. This is crucial for team building and hence is also mandatory.

Parent and student community 2017-2018



Student representatives and council

Students elect student representatives for all year groups each year. They discuss various school issues that are directly affecting the students with the Head of School and the two teachers that support the student council.

Parent Support Group (PSG)

The PSG meet four times per year with the head of school. Their core business is to support school events and act as a representative of class-specific items of discussion with the HoS. You can contact the PSG at their general email address PSG@edu.isalmere.nl
For a list and contact details of our parents on the PSG click [here](#)

School representative council (DMR)

The participation council (DMR) has a voice and can influence certain policy aspects of the school. The influence can be in the form of advice and/or agreement. There are constructive discussions on various items with the Head of school. The council meets four times a year with the head of school. The council consists of elected representatives from the teachers/staff, students and parents. All representatives are elected for a period of 3 years.

The participation council of the ISAlmere is part of the council (MR) of het Baken.
All questions or input for the DMR can be send to DMR@edu.isalmere.nl.